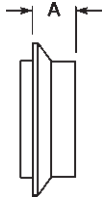


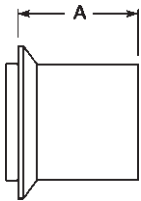
I-line/Q-line Ferrules



3 Male I-Line Short Weld Ferrules - 14WI

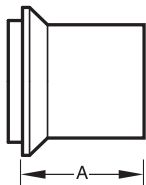
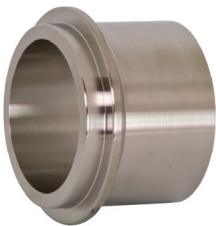
Tube OD	A	304 Stainless Steel Part Number	316L Stainless Steel Part Number
1"	.600	14WI-G100	14WI-R100
1½"	.765	14WI-G150	14WI-R150
2"	.790	14WI-G200	14WI-R200
2½"	.848	14WI-G250	14WI-R250
3"	.906	14WI-G300	14WI-R300
4"	1.031	14WI-G400	14WI-R400
6"	.940	---	14WI-R600
8"	.940	---	14WI-R800

3 Male I-Line Long Weld Ferrules - 14WLI



Tube OD	A	304 Stainless Steel Part Number	316L Stainless Steel Part Number
1"	1.562	14WLI-G100	14WLI-R100
1½"	1.843	14WLI-G150	14WLI-R150
2"	2.062	14WLI-G200	14WLI-R200
2½"	2.188	14WLI-G250	14WLI-R250
3"	2.375	14WLI-G300	14WLI-R300
4"	2.688	14WLI-G400	14WLI-R400
6"	2.688	---	14WLI-R600

3 Male I-Line Heavy Wall Tank Weld Ferrules - 14WHI



Tube OD	A	304 Stainless Steel Part Number	316L Stainless Steel Part Number
1"	1.312	14WHI-G100	14WHI-R100
1½"	1.457	14WHI-G150	14WHI-R150
2"	1.500	14WHI-G200	14WHI-R200
2½"	1.437	14WHI-G250	14WHI-R250
3"	1.500	14WHI-G300	14WHI-R300
4"	1.812	14WHI-G400	14WHI-R400

G

I-Line &
Q-Line